



# News Release

## Port Sees Busiest May Ever

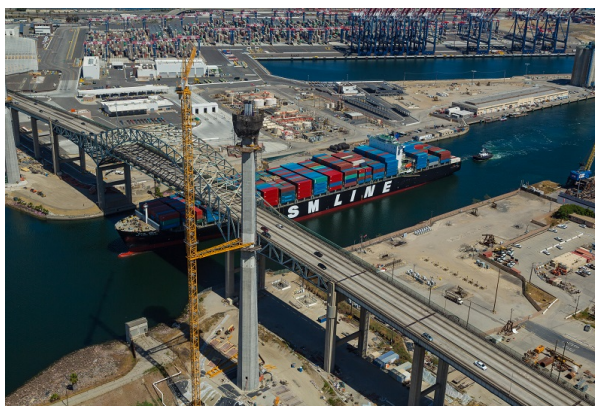
### Cargo rises on economic gains, shipping alliance changes

June 12, 2017

New vessel-sharing alliances and increased use of terminals pushed the number of containers flowing through the Port of Long Beach in May to a record high for the month.

A total of 648,287 twenty-foot equivalent units (TEUs) moved through the harbor in May, an increase of 1.2 percent compared to the same month a year ago. May 2016 volume was the second-highest May in the Port's history behind May 2006.

Last month, Long Beach dockworkers handled 336,594 import containers, a 1.8 percent increase. Export containers were down 14.3 percent to 118,786 TEUs, while empties rose 12.6 percent to 192,908. Overall, it was the best month since September 2015.



"Last May was a great month, so we're encouraged that we did even better this year," said Port of Long Beach Executive Director Mario Cordero. "Our strong belief is that if we continue to build the most modern facilities of any port in the United States and provide the best service, the customers will come."

The National Retail Federation has forecast steady growth in imports during the next few months as the peak season begins. For the calendar year to date, cargo traffic has risen 4.1 percent in Long Beach.

"The new alliances are making more efficient use of our terminals with their deployments," said Harbor Commission President Lori Ann Guzmán. "Beyond that, the strong U.S. dollar is growing our imports, but not helping our exports. Still, we're in line with our projections for the year, and the Port is in a strong position as we head into the peak season."

The Port of Long Beach is one of the world's premier seaports, a gateway for trans-Pacific trade and a trailblazer in goods movement and environmental stewardship. With 175 shipping lines connecting Long Beach to 217 seaports, the Port handles \$180 billion in trade annually, supporting hundreds of thousands of Southern California jobs.

The latest monthly cargo numbers [can be found here](#).

More detailed cargo numbers are at [www.polb.com/stats](http://www.polb.com/stats).

**Media Contact:** Lee Peterson, Port of Long Beach Media Relations Lead, (562) 283-7715 (office), (562) 519-2177 (cell), [lee.peterson@polb.com](mailto:lee.peterson@polb.com).

[Subscribe](#)

[Past Issues](#)

---

**Share this Story:**



**Follow the Port of Long Beach:**



Facebook



Twitter



Instagram



YouTube



polb.com

---

*Copyright © 2017 Port of Long Beach, All rights reserved.*  
[unsubscribe from this list](#) [update subscription preferences](#)

View the Port of Long Beach's [Privacy Policy](#).

---

[Forward this email to a friend](#)